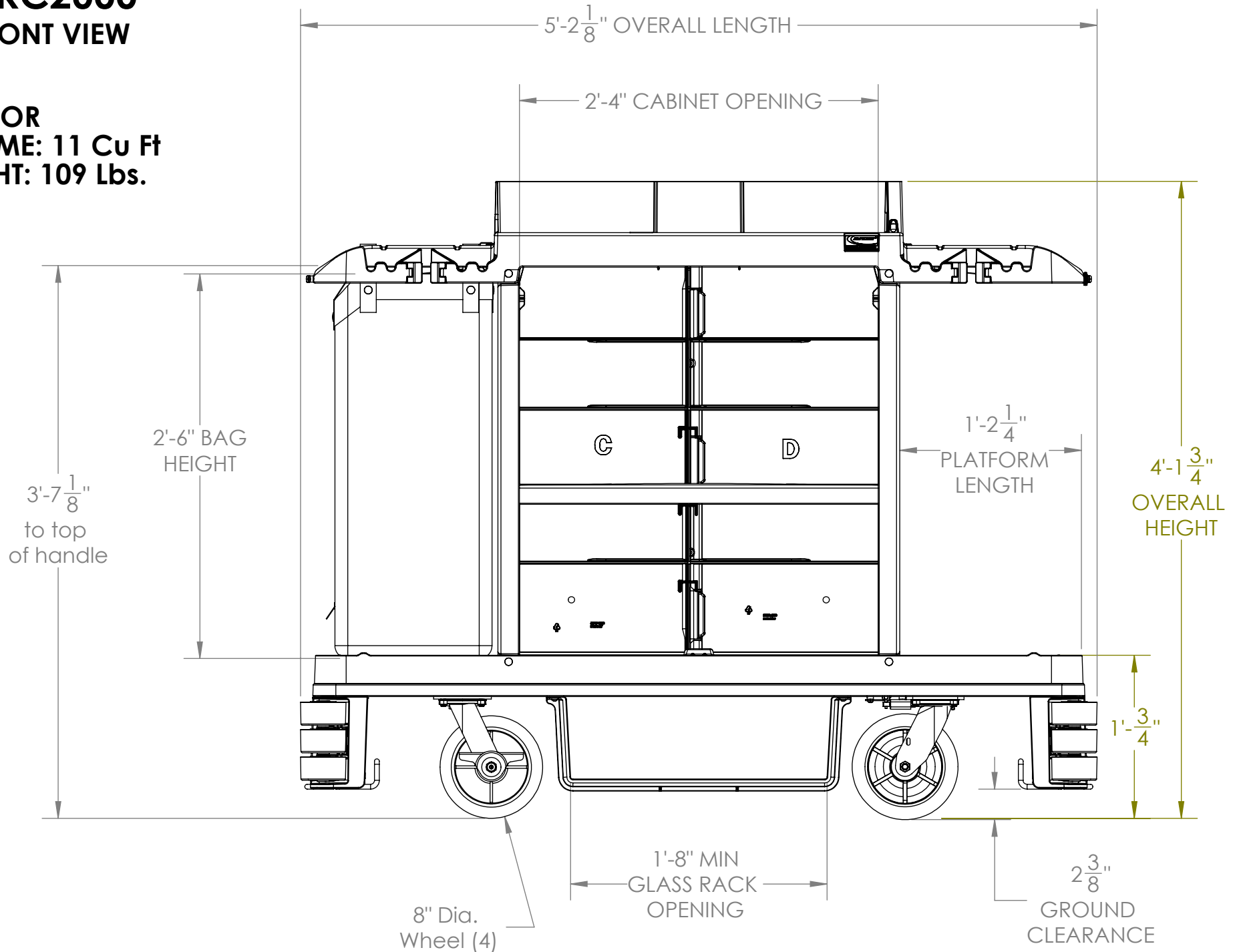


HKC2000

FRONT VIEW

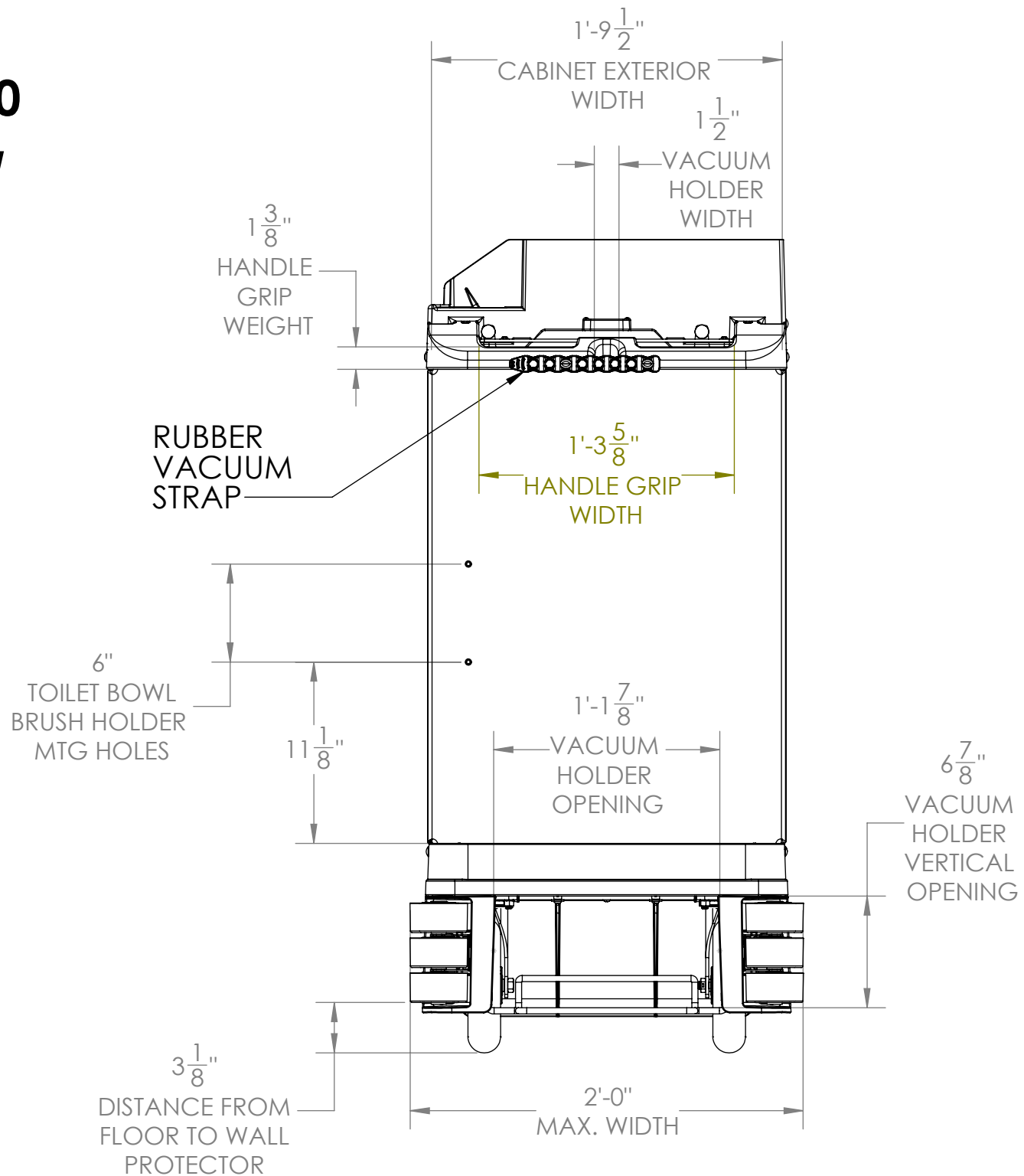
INTERIOR
VOLUME: 11 Cu Ft
WEIGHT: 109 Lbs.



REVISION B

HKC2000

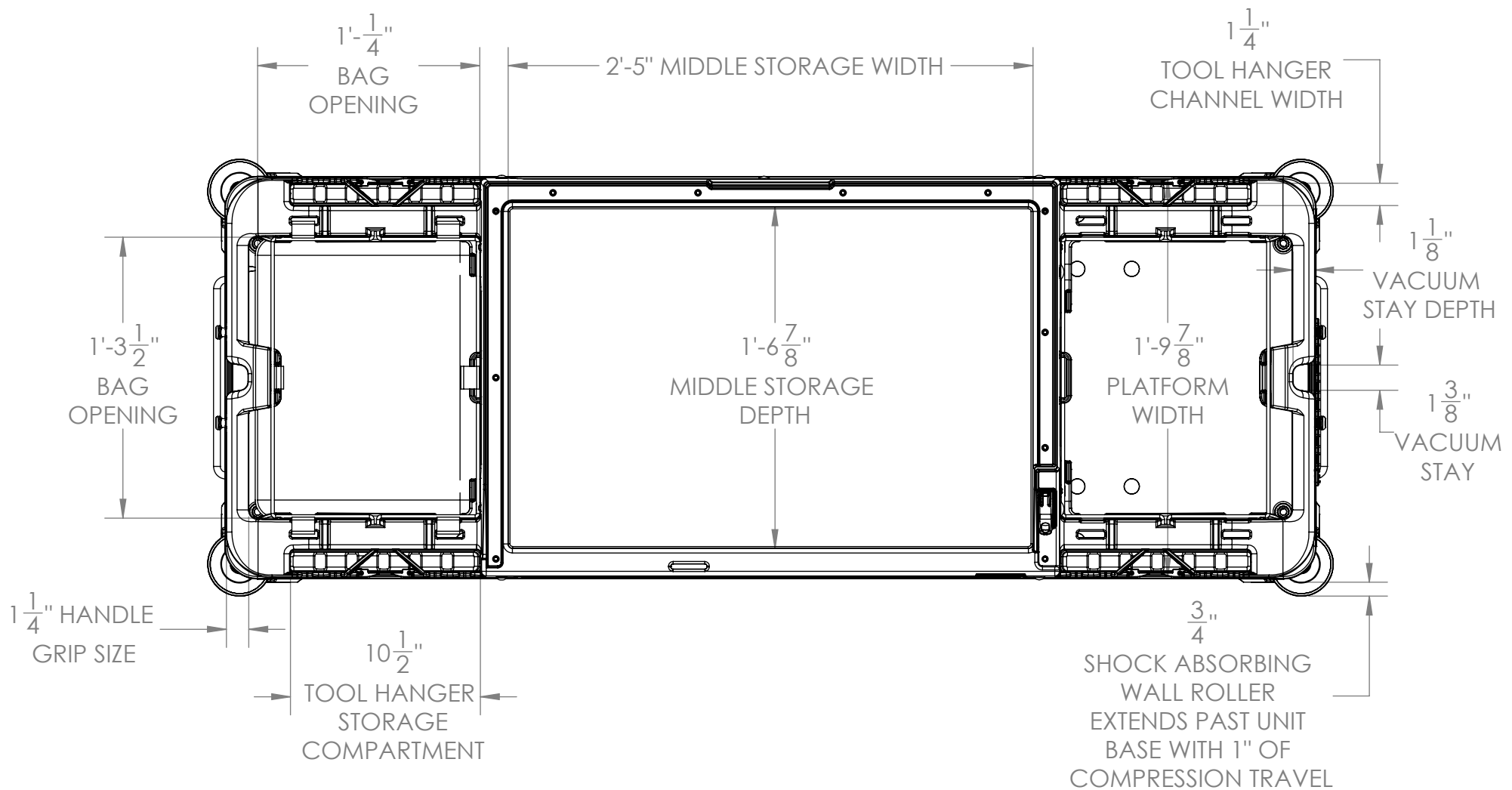
SIDE VIEW



REVISION B

HKC2000

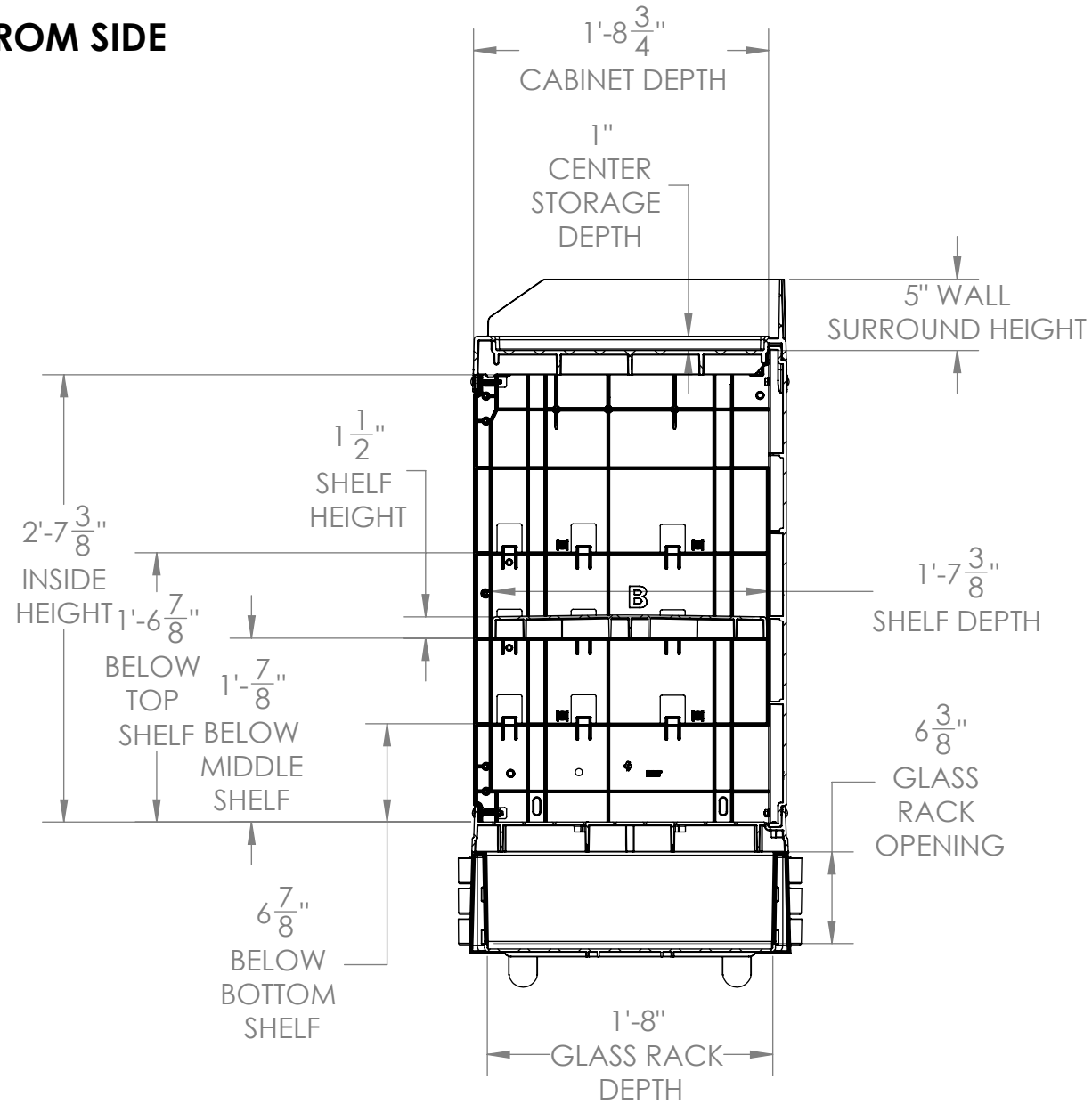
TOP VIEW



REVISION B

HKC2000

SECTION VIEW FROM SIDE



SECTION C-C

REVISION B